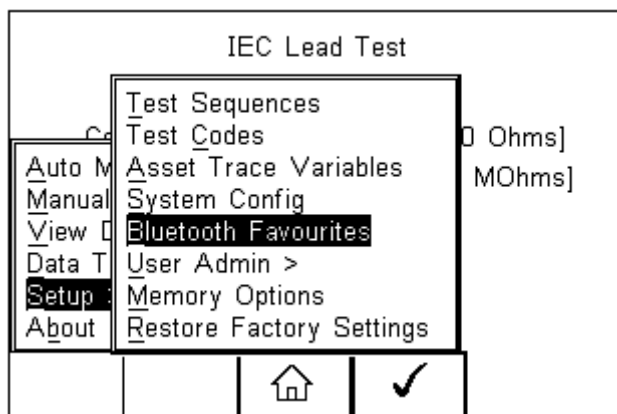




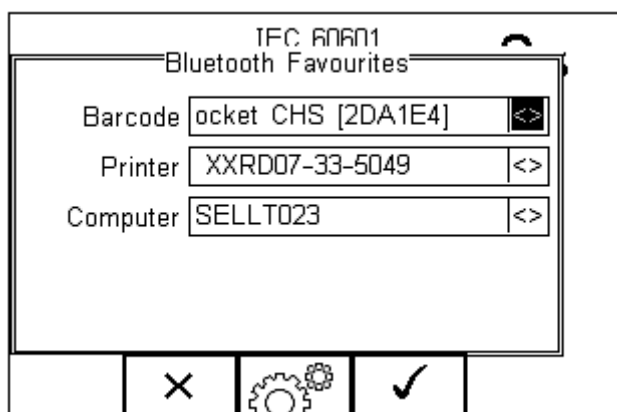
RIGEL MEDICAL
GMC-INSTRUMENTS GROUP

What's the process for pairing devices using Bluetooth Favourites?

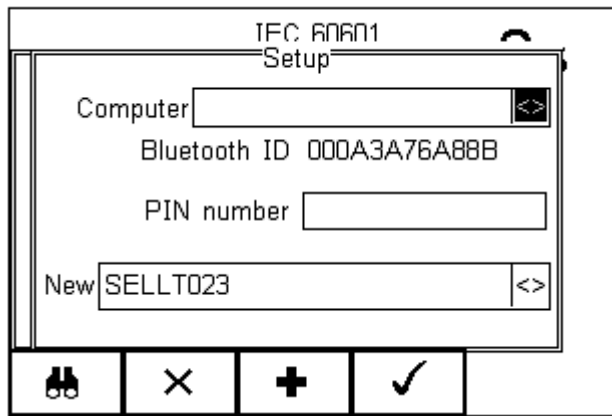
1) Select F4 and then short key S for Setup and then B for Bluetooth Favourites



2) Scroll to the device type you are attempting to connect to (barcode, printer or computer) and press F3 for set up



3) Select F1 to search for nearby Bluetooth devices and our device should appear in the new menu



4) Select F3 to add this device then F4 to save the changes and return to the Bluetooth Favourites menu

If you require more help, please contact us at

<https://www.seaward.com/gb/enquire/>.