

## Updating the UniPulse 400 Firmware

Note: This is for the UniPulse 400 ONLY, if you would like to update the original Uni-Pulse please follow application note 0047.

[http://www.rigelmedical.com/Includes/get\\_download.php?id=137](http://www.rigelmedical.com/Includes/get_download.php?id=137)

This document is an aid to update the firmware for Rigel's UniPulse 400 using the UP400FirmwareLoader.exe program to enable the user to have the most up to date features without the need to return the device.

### Equipment required

The following equipment is required for this procedure:

- 1) PC with installed with the UniPulse USB Driver downloadable from [http://www.rigelmedical.com/Includes/get\\_download.php?id=166](http://www.rigelmedical.com/Includes/get_download.php?id=166)
- 2) USB type A to type B cable
- 3) UP400FirmwareLoader.exe and the UniPulse 400 Firmware downloadable from [http://www.rigelmedical.com/Includes/get\\_download.php?id=260](http://www.rigelmedical.com/Includes/get_download.php?id=260)

### Programming Procedure

- 4) Power on the device
- 5) Using the USB cable, connect the unit directly to your PC as shown in fig. 1, below:



Figure 1 Back Plate USB Connection

- 6) Open the UniPulse400 Firmware Loader software

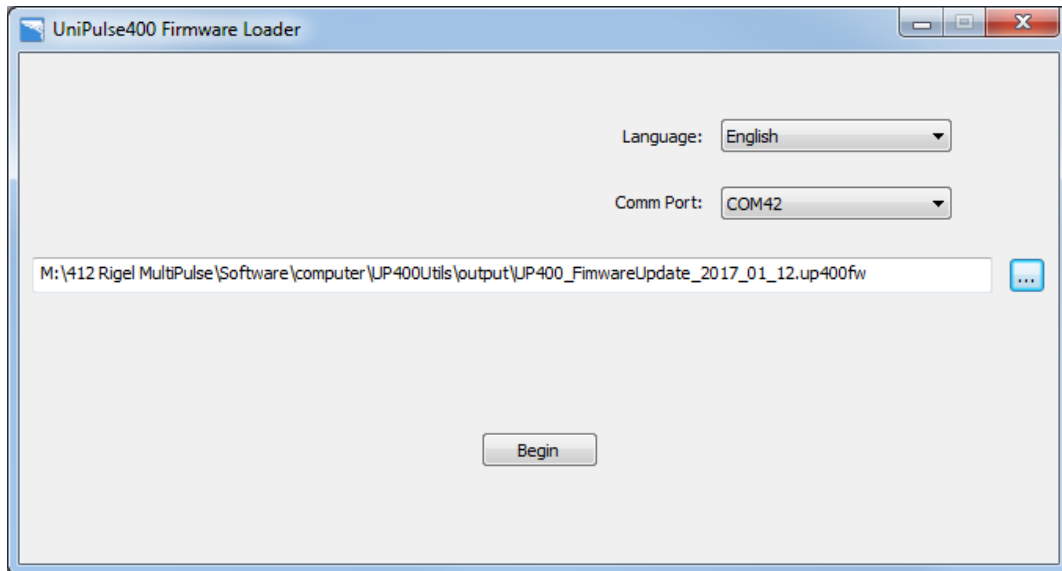


Figure 2 UP400 Firmware Loader

- 7) In the 'Comm Port' dropdown box, select the serial port to which the unit is connected
- 8) Click the ellipses to the right of the long white text box in the middle of the dialog box, then locate and select the location of the UniPulse 400 Firmware
- 9) UP400FirmwareUpdate\_[YYYY\_MM\_DD].up400fw
- 10) Click the 'Begin' button. The LCD screen on the device should change to appear as in fig. 3, below:

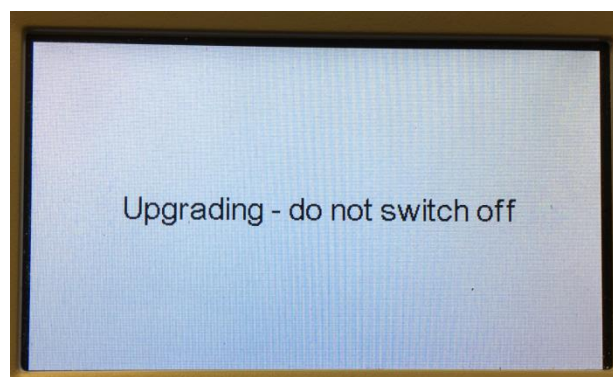


Figure 3 UP400 LCD screen when updating firmware

- 11) Press the red OFF power key
- 12) Close the Rigel UP400FirmwareLoader.exe

---

**13)** Disconnect the USB cable from the UniPulse 400

The new firmware version can now be viewed in the ABOUT screen on the UniPulse 400.

If you have any issues please email [support@rigelmedical.com](mailto:support@rigelmedical.com) and we will be more than happy to help you.