

Bluetooth connectivity with Windows 7

This Application note is to aid the user in connecting and communicating the Rigel devices with Windows 7 using the supported BELKIN Bluetooth module

Note:

We advise that internal Bluetooth be disabled should your laptop come with this.

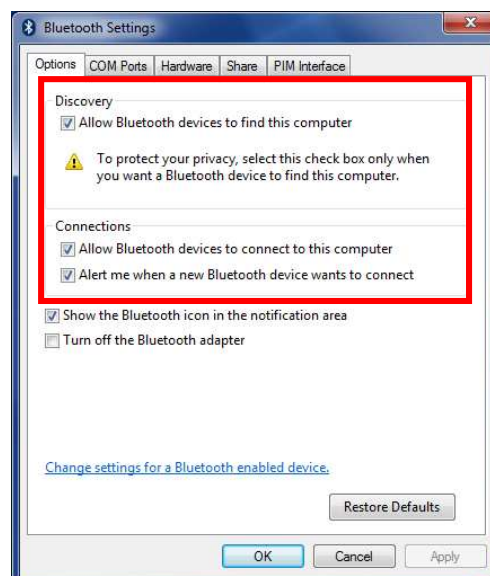
We advise that the user delete all Rigel devices in the PC Bluetooth menu and also any COM ports associated with Rigel devices before performing this connection.

Make your PC Bluetooth Discoverable

- 1) Right click on the Bluetooth Icon and select Open Settings

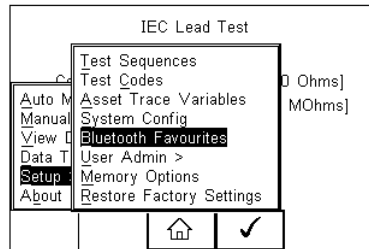


- 2) Select the Options tab and make sure that the PC is discoverable and tick the connections field for connecting and alert.

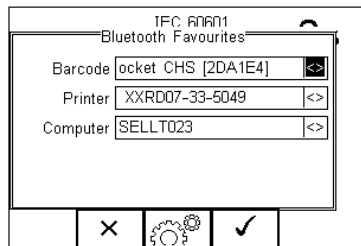


Pair the Rigel device with the PC

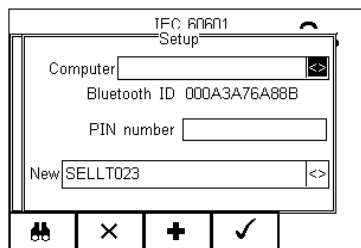
- 3) Select F4 and then Setup (S) and then Bluetooth Favourites (B).



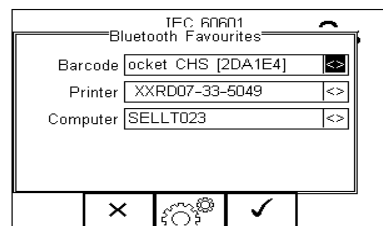
- 4) Press F3 on the Computer field



- 5) Select F1 to search for nearby Bluetooth devices and your PC should appear in the New menu



- 6) Select F3 to add this PC then F4 to save the changes and return to the Bluetooth Favourites menu then select F4 again to confirm the selection.

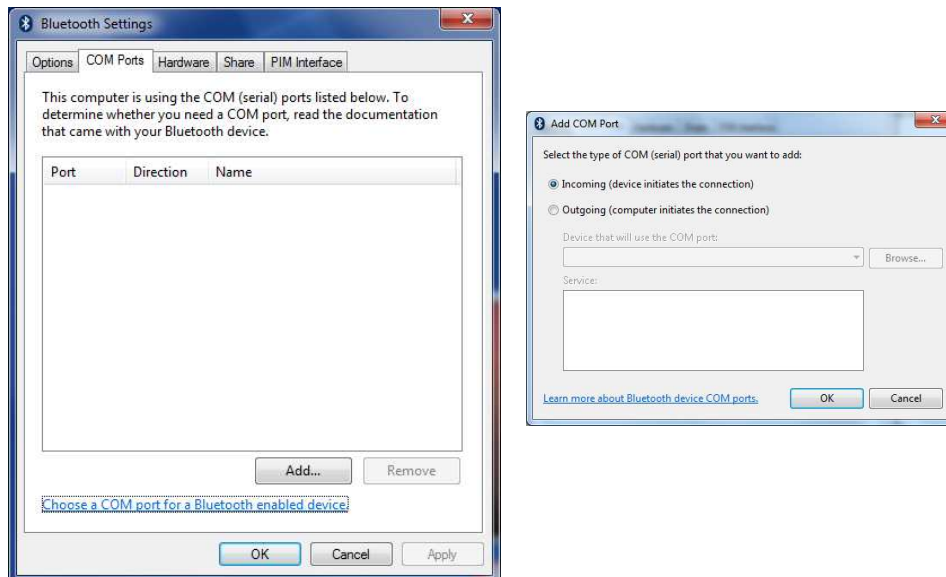


Bluetooth Connection with your PC

- 7) Right click on the Bluetooth Icon and select Open Settings



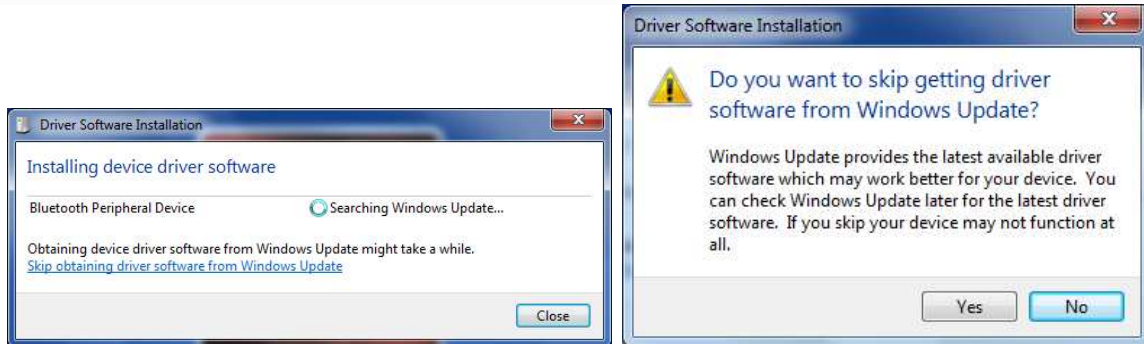
- 8) Go to the Com Ports tab and add an incoming COM port



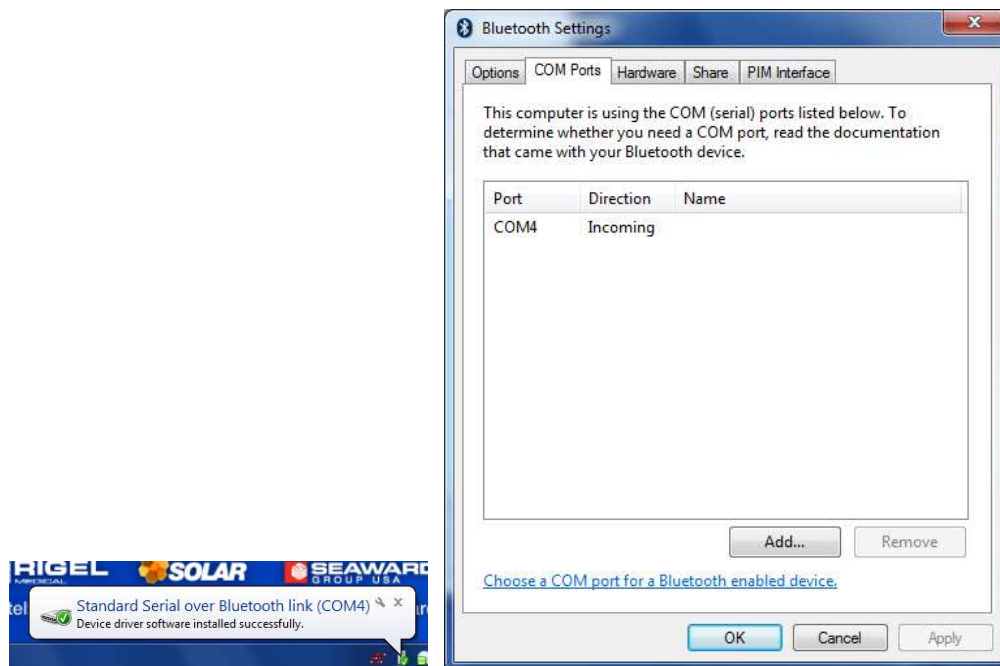
- 9) Windows 7 tries to download Bluetooth drivers for the Rigel devices. However there are no drivers required for the Bluetooth within the Rigel products. Click on the icon when it appears as seen below.



- 10) Select "skip obtaining driver software" which is blue and underlined to stop windows 7 looking for driver as the Rigel device won't be able to connect to the PC while Windows 7 is performing this task tries to search the internet for drivers. Select yes on the driver software installation screen to skip the driver update.



11) Once complete the Incoming Port should be given a COM Port number as seen below.



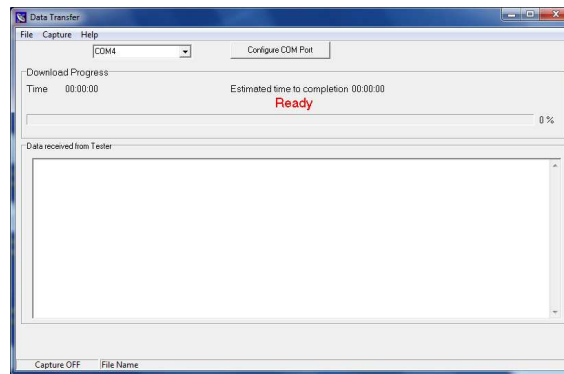
Note:

If the Rigel device cannot find the PC Bluetooth, it might be that the laptop has disabled all Bluetooth and Wi-Fi (like in airplane mode) as these can sometimes be linked and can also disable any external Bluetooth devices connected such as the BELKIN.

To confirm the COM port open either the data transfer program or MedeBase and follow the appropriate steps below

Data transfer

12) Open the data transfer program



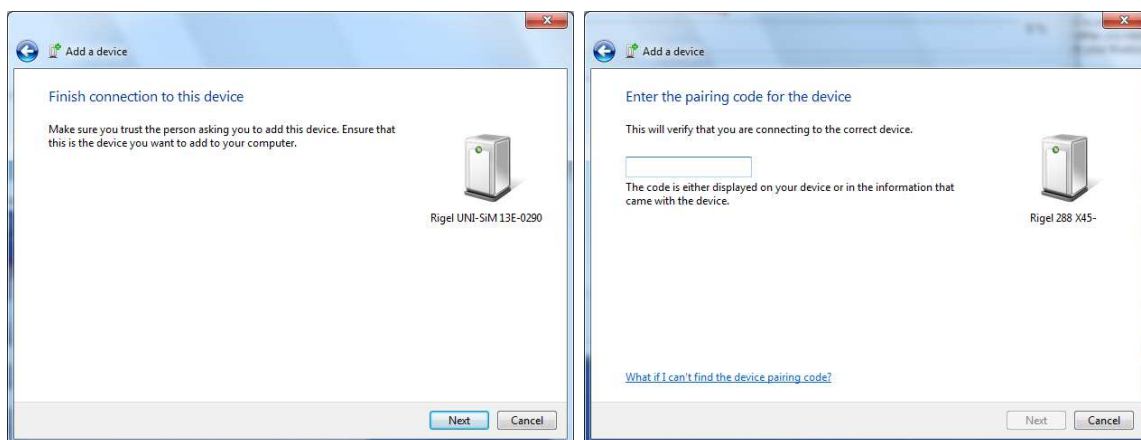
13) Select the COM port indicated previously from the dropdown list.

14) On the Rigel device Select F4 and then (D) Data Transfer and then Download to PC (D)

15) Message appears that device is trying to connect. Click on the message and then select next.

Note:

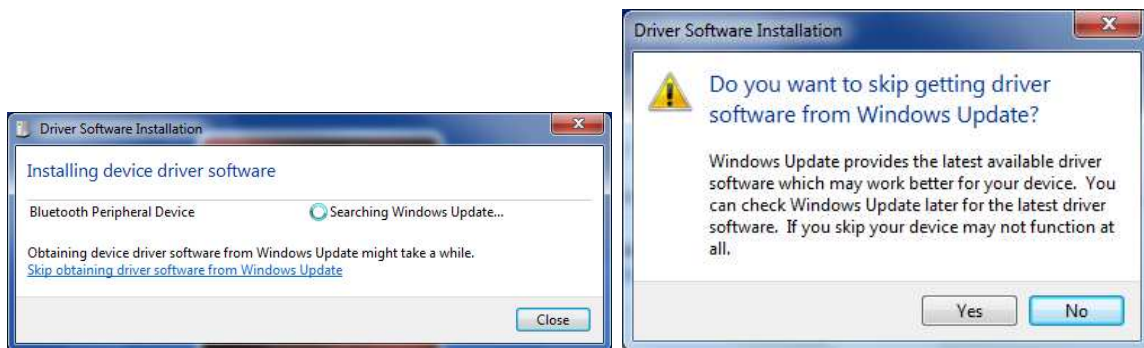
You may be asked to input a code - default is 0000



16) Windows 7 tries to download Bluetooth drivers for the Rigel devices. However there are no drivers required for the Bluetooth within the Rigel products. Click on the icon when it appears as seen below.




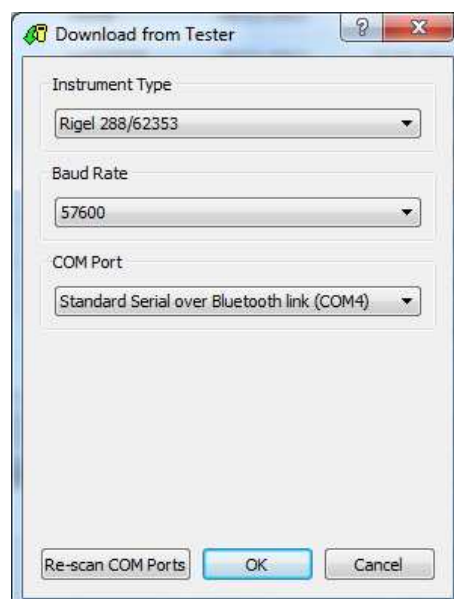
- 17) Select "skip obtaining driver software" which is blue and underlined to stop windows 7 looking for driver as the Rigel device won't be able to connect to the PC while Windows 7 is performing this task tries to search the internet for drivers. Select yes on the driver software installation screen to skip the driver update.

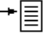


- 18) Once the software installation has completed the device should be pair. This is confirmed by a Bluetooth icon in the right hand corner of the Rigel screen

Med-eBase

- 19) Open MedeBase and select Tools > Download or the download icon 
- 20) Select the Rigel instrument type, Baud rate (default 57600) and then Com port allocated previously and select OK



- 21) On the Rigel device select F4  and then (D) Data Transfer and then Download to PC (D).
- 22) Message appears that device is trying to connected. Click on the message and then select next. Follow points 15 to 17 above on first onnection between device and PC.



From this point you should be able to pair the device with both the Data tranfer program and Med-eBase using the COM port assigned on this occiaseion without any further instructions.

End.