

# Uploading Configuration Data into Rigel 288 and 62353

Introduction text

## Equipment required

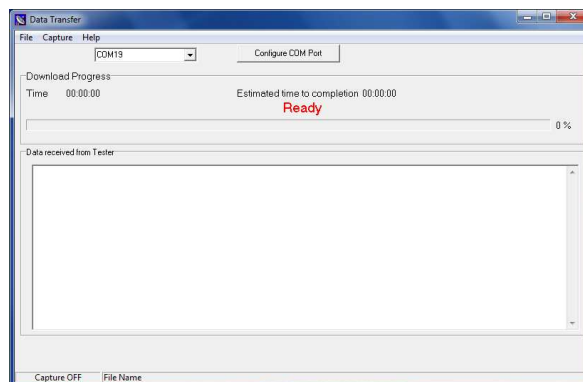
- Rigel 288/62353
- Data Transfer program
- Configuration file (txt file)

- 1) Firstly make sure either the Bluetooth pairing has been completed between the Rigel 288 and PC or the RS 232 cable is connected for both the Rigel 288 and 62353. Please see application note 0035 for assistance with Bluetooth pairing.

### **Note:**

Only RS 232 option is available for the Rigel 62353.

- 2) On the Rigel device go to Menu, Data Transfer, and then Configuration data.
- 3) On the PC open the data transfer.exe program

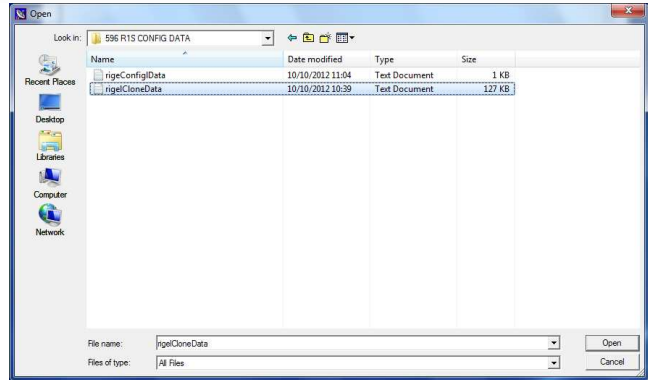
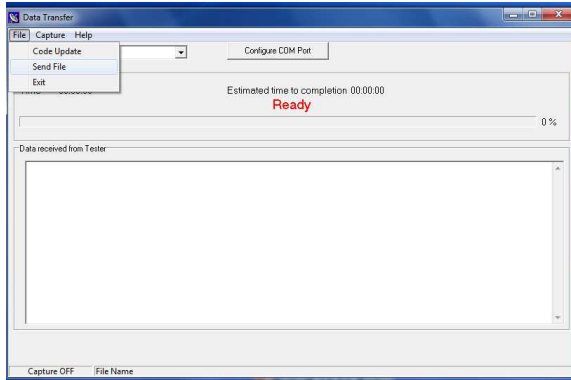


- 4) Select the correct COM port related to the Bluetooth or serial cable connection.

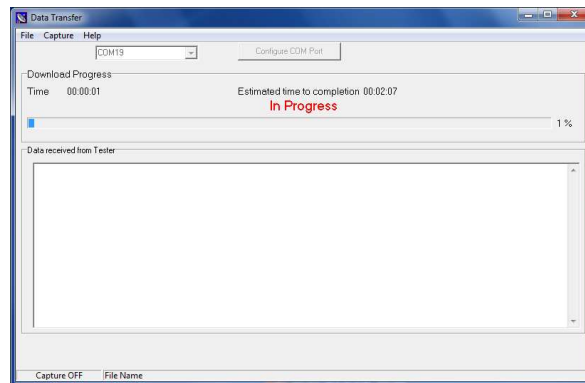
### **Note:**

Com 1 is for serial connections

- 5) The Rigel device should indicate that it is connected to the PC with 'Ready to Send or Receive Data' on the Rigel device screen
- 6) On the data transfer program select File and then Send File and then select the location of the configuration file



7) Select Open to start the transfer. An estimated time and progress bar will appear to indicate time remaining.



End.