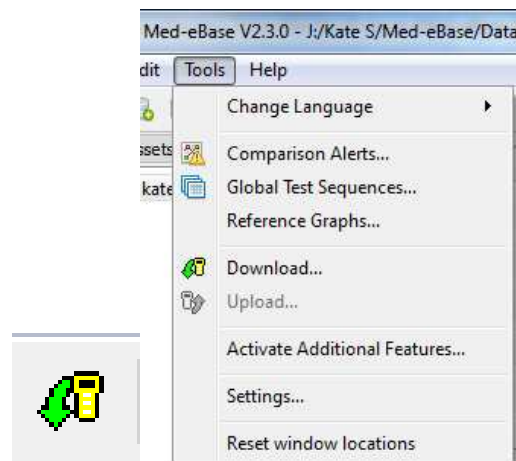


Downloading from Uni-Pulse to Med-eBase

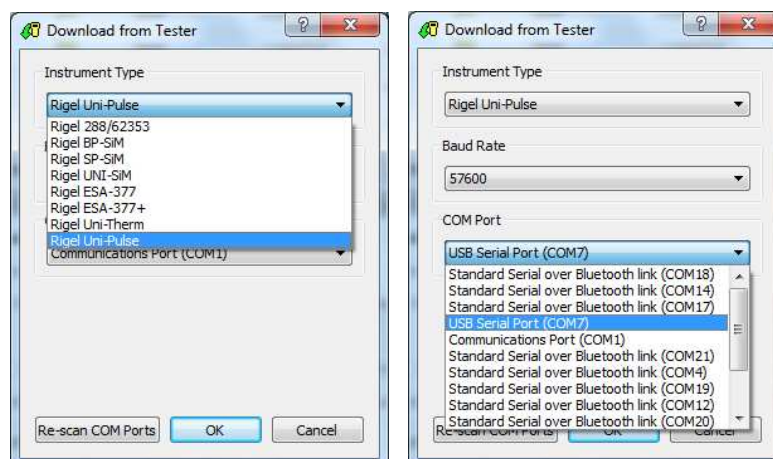
This application note details how to download results and communicate between the Uni-Pulse and Med-eBase

Med-eBase:

- 1) First open Med-eBase Version 2.3 or higher
- 2) Select the Download from Tester icon which is situated on the top left hand side of the screen or in Tools and Download...

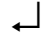







- 3) Select Uni-Pulse from the drop down list and confirm the COM port for the USB serial connection.



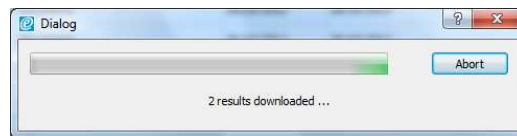
- 4) Then select Ok.

On The Uni-Pulse:

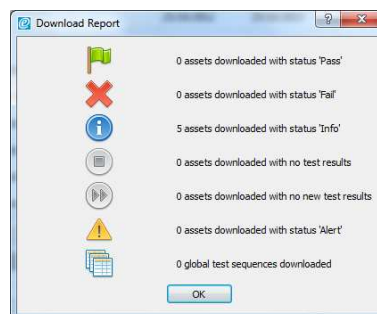
- 5) From the main menu Select Data by selecting the  key and then use the up and down arrows  to select how you would like to search for the results to download; Asset ID, Make, Model, Serial number etc. then select F5  Search to find results.
- 6) Selecting F4  Download to PC allows the user the either Download selected items or Download all search items?
- 7) Then confirm selection with F4  confirm.
- 8) Then select USB or Bluetooth. Then confirm selection with F4  confirm.

Note: Currently Med-eBase transfer can only be conducted via USB.

- 9) During transfer a bar appears on both Med-eBase and the Uni-Pulse



- 10) When the download is complete and summary box appears on Med-eBase to enable the user to view what has been downloaded successfully.



- End.