

**Title: Download test results from the Rigel 377**

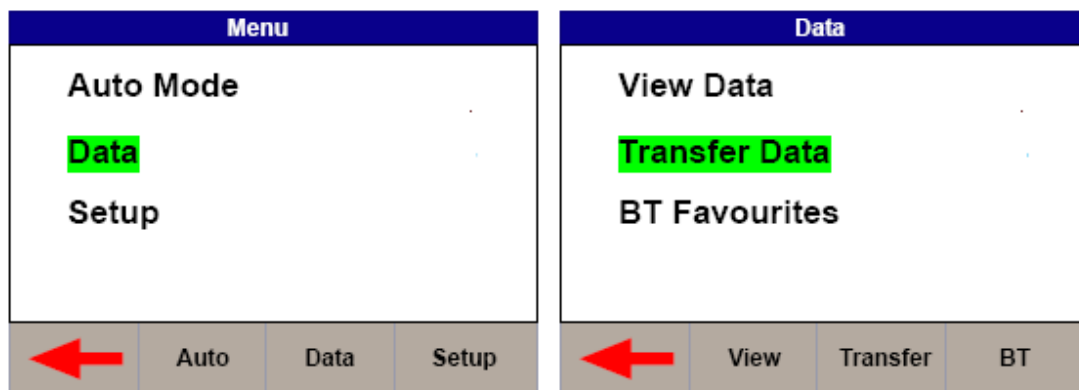
This guide will take you through the steps required to download test results from the Rigel 377 ElectroSurgical Analyser to a PC.

Equipment required:

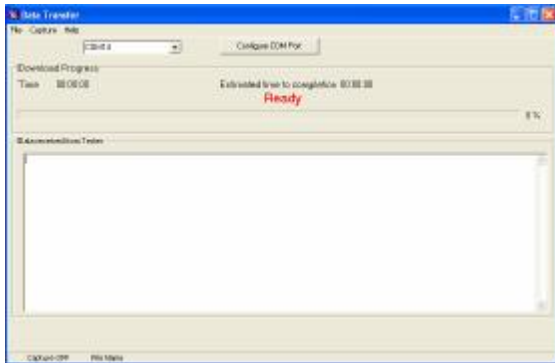
- Rigel 377
- PC with either Bluetooth connectivity or USB A/B printer lead and Seaward USB driver software
- DataTransfer.exe for file transfer

**Transfer by Bluetooth (Transfer via USB is covered later in this document)**

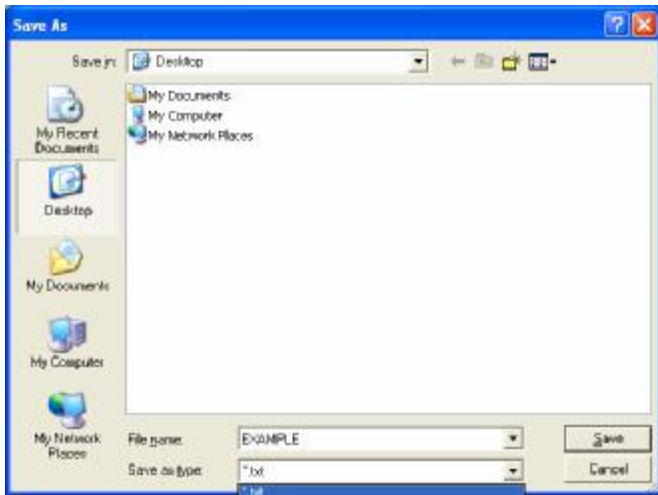
1. Setup the Bluetooth connection as per the Rigel 377 Instruction Manual.
2. Select MENU / DATA / TRANSFER DATA



3. On the PC, open the DataTransfer.exe program. (This is available as a free download from [rigelmedical.com](http://rigelmedical.com))

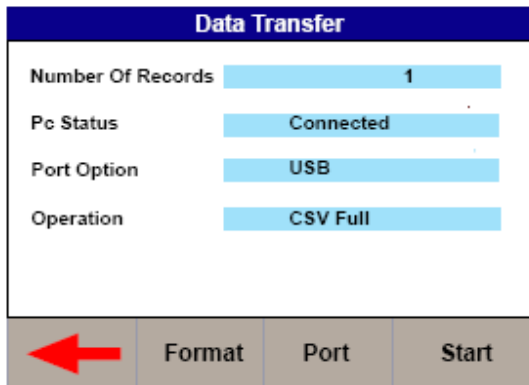


4. Select CAPTURE / START CAPTURE then choose a save name and location and change the file type to either .csv or .txt and press Save

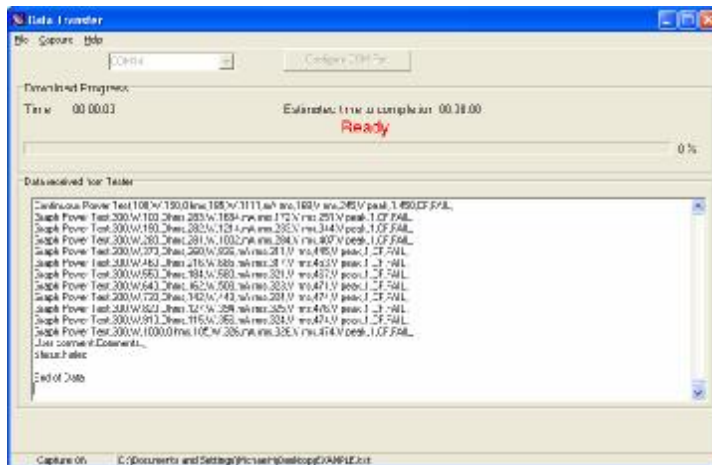


5. Use the Function Keys on the Rigel 377 to configure the Data Transfer format. Press F3 to change port to Bluetooth. Press F2 to change the file format to either CSV Full or CSV Summary for transfer to PC.

Press F4 START to begin the transfer.

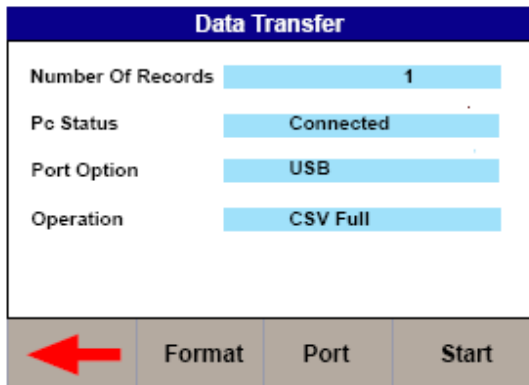


6. A request will appear on the PC for confirmation of the pass key. This is set to 0000 (4 zeroes) as default.
7. On confirmation of the pass key, the Data Transfer will complete. Go to CAPTURE / END CAPTURE to complete the transfer.

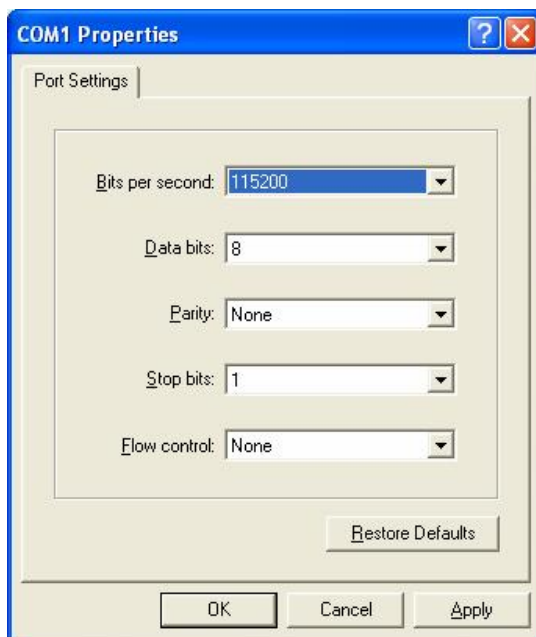


### To carry out the data transfer by USB lead

1. Install the ERT1557USB driver. (This driver is available as part of the Rigel 377 firmware download, or on request from [support@rigelmedical.com](mailto:support@rigelmedical.com))
2. Connect the USB lead between the Rigel 377 and PC.
3. Set the format on the Rigel 377 to USB



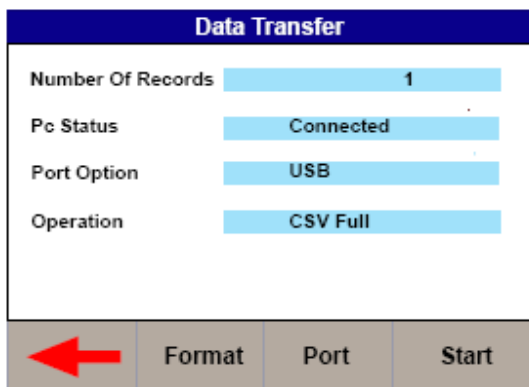
4. Open DataTransfer.exe. Select COM1 from the drop down menu.
5. Select Configure COM Port. Set Bits per second: to 115200 and Apply.



6. Select CAPTURE / START CAPTURE then choose a save name and location and change the file type to either .csv or .txt and press Save



7. Press F4 START on the Rigel 377 to begin the transfer. Then select CAPTURE / STOP CAPTURE to complete the data transfer.



End.