
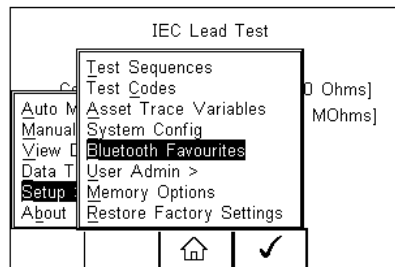



# Windows 7 and Rigel Communication

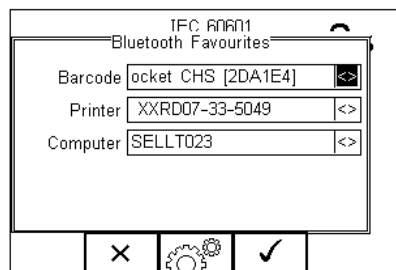
This Application note is to aid the user in connecting and communicating the Rigel devices with Windows 7 using Bluetooth.


## Pair the Rigel device with the PC

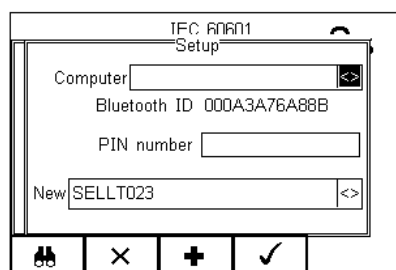
- 1) Select F4  and then Setup (S) and then Bluetooth Favourites (B).



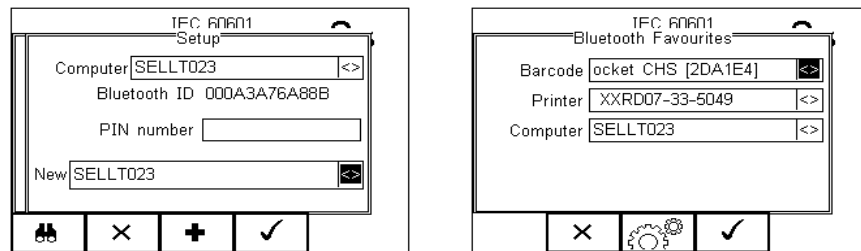
- 2) Scroll to the computer and press F3  for set up.



- 3) Select F1  to search for nearby Bluetooth devices and your PC should appear in the New menu

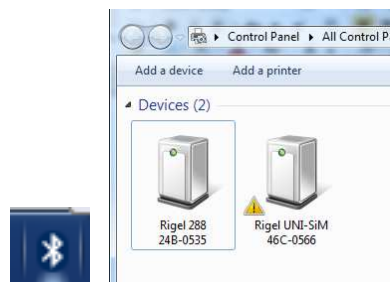


- 4) Select F3 **+** to add this PC then F4 **✓** to save the changes and return to the Bluetooth Favourites menu then select F4 again to confirm the selection.

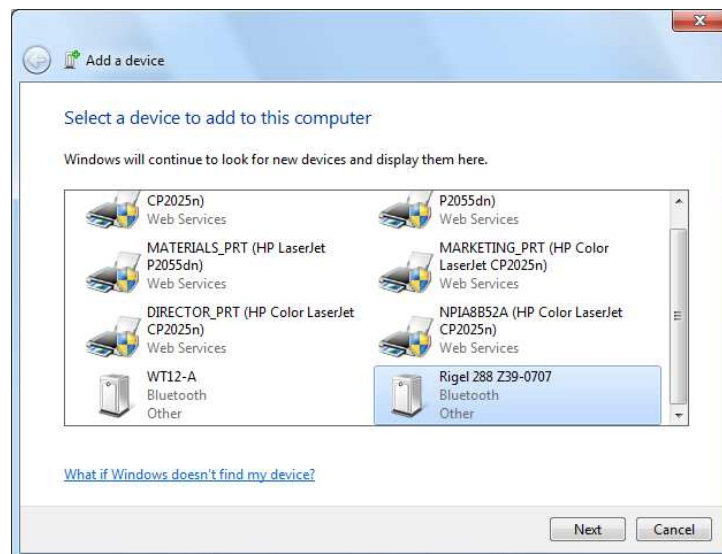


#### Add the Device to the PC

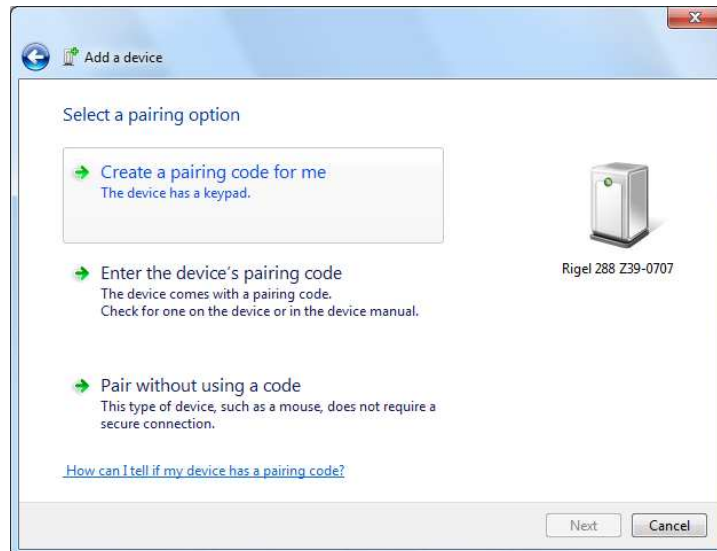
- 5) Open the Bluetooth devices by either Control Panel \ Devices and Printers \ Bluetooth Devices or the **Bluetooth icon** in the system tray (bottom right hand corner).



- 6) Select the "Add device" icon on the top left hand of the screen and the screen below appears

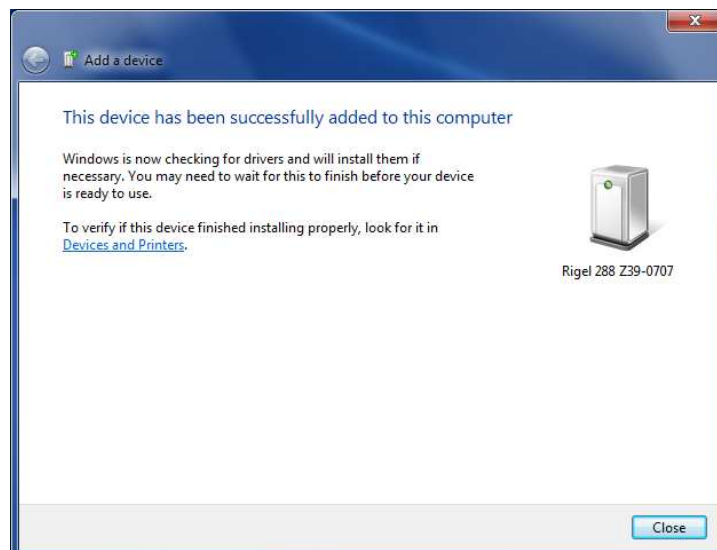


- 7) Click next and then select a pairing option. The Rigel products do not require a pairing key though if required, the default within the Rigel products is "0000".

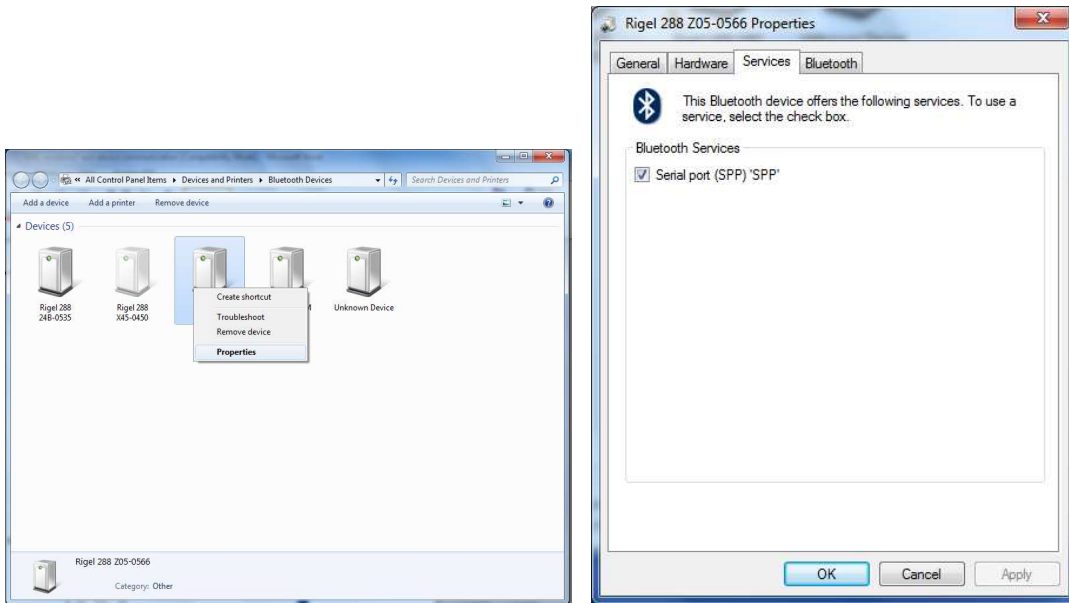


8)

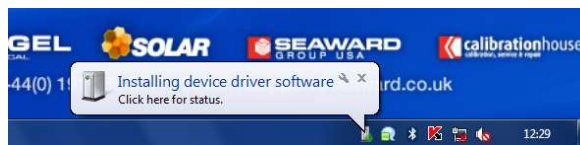
- 9) The device should now be added.



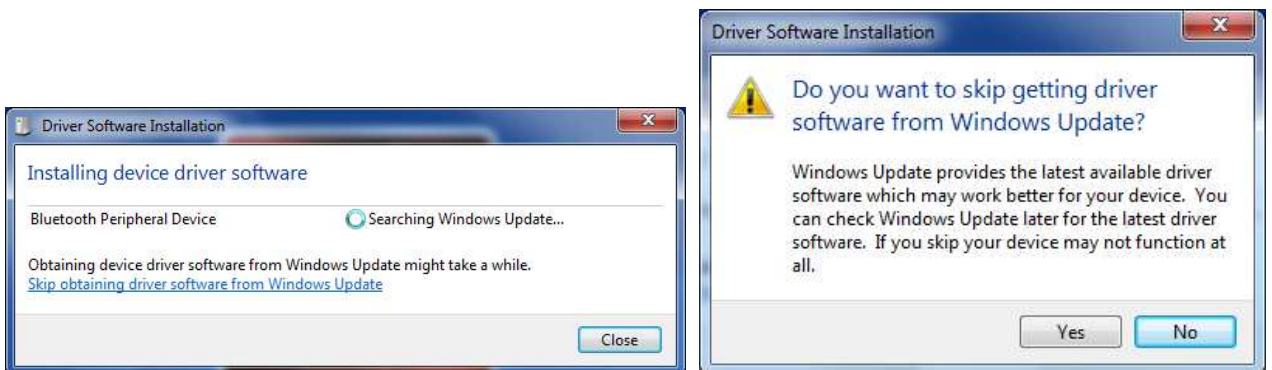
- 10) Right click on the device icon and go to properties and then select the services tab to check that the serial port is highlighted. Then click Ok to close that screen



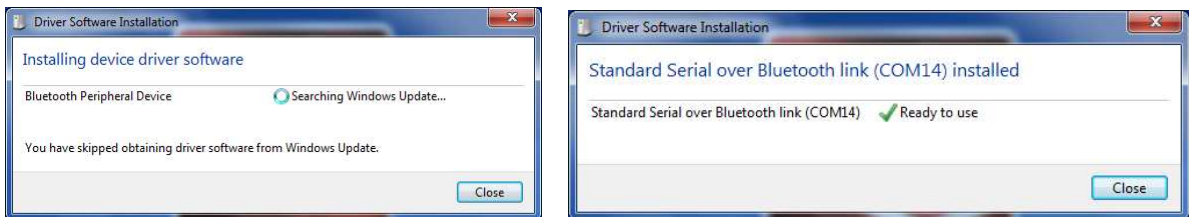
- 11) Windows 7 tries to download Bluetooth drivers for the Rigel devices. However there are no drivers required for the Bluetooth within the Rigel products. Click on the icon when it appears as seen below.



- 12) Select "skip obtaining driver software" which is blue and underlined to stop windows 7 looking for driver as the Rigel device won't be able to connect to the PC while Windows 7 is performing this task tries to search the internet for drivers. Select yes on the driver software installation screen to skip the driver update.

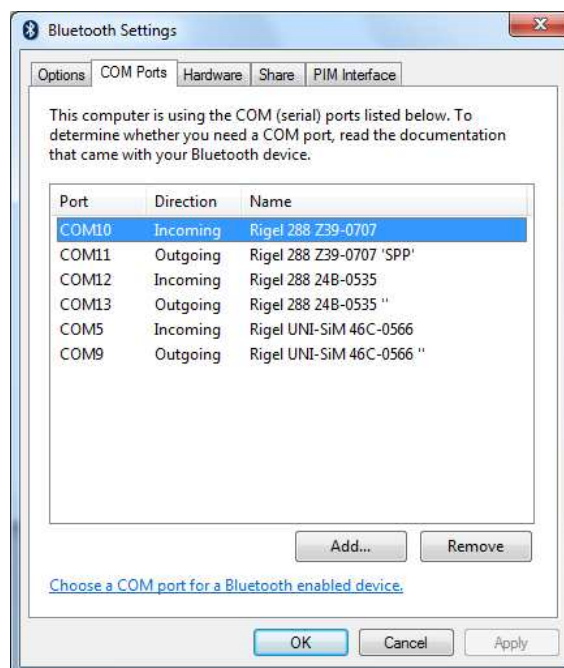


- 13) The installer will confirm that this stage has been skipped and indicates when the device is ready to use and which comport is available. When completed select close this screen

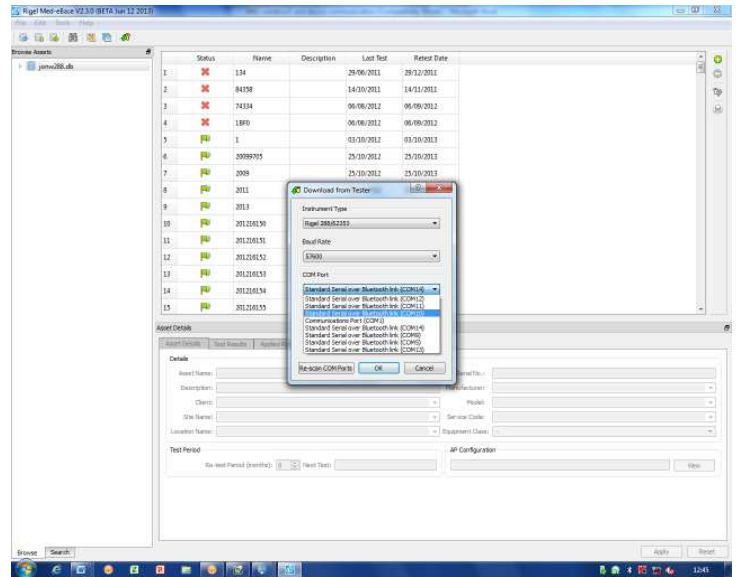
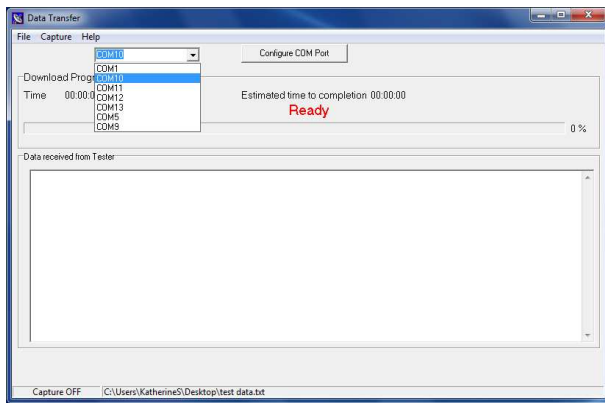


- 14) Then Right click on the Bluetooth icon in the systems tray and select "Open Settings".

- 15) Then select the second tab from the left "COM Ports" and locate the incoming comport for your Rigel device.



- 16) Open either the data transfer program or Med-eBase before entering the data transfer section within the Rigel Device and confirm that the same comport is being used from the screen above.



End