

# Installing Med-eBase

To install Med-eBase Asset Management software, you will need to meet the minimum system requirements listed below.

## Hardware

- IBM compatible 1 GHz or higher processor
- 512 MB of RAM
- 350 MB available hard drive space
- Colour monitor with 32-bit colour capability
- CD ROM drive

## Software

- Windows XP SP2 or later, Windows Vista, Windows 7
- 32-bit/64-bit Operating System

## **Note:**

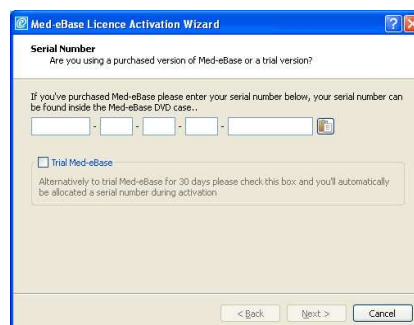
*Before installing Med-eBase ensure no other applications are running.  
Installation may vary with operating system*


- 1) Insert the Med-eBase CD into your CD drive and the installation should begin automatically.
- 2) If Med-eBase does not automatically install then open My Computer or Windows Explorer and view the CD drive. Locate and RUN the file setup.exe to begin the installation.
- 3) If you are using the installer package downloaded from the rigelmedical.com website, open the Rigel Med-eBase Installer.exe file to begin the installation.
- 4) Follow the onscreen instructions to complete the installation.

The language setting can be changed from the installation language once the software is fully installed.

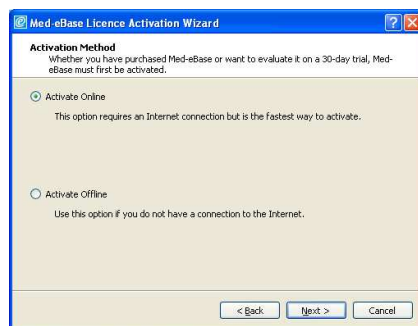
Once the program is installed, a shortcut will be provided on your desktop. Double click the shortcut with your mouse to open Med-eBase V2.

When first running Med-eBase the licence activation screens will be displayed. Follow the on-screen instructions to activate the 30-day trial or full Med-eBase program.

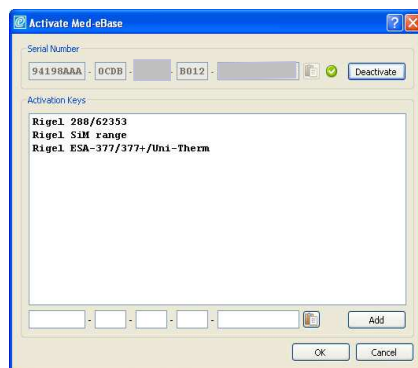


To trial Med-eBase for 30 days select the Trial Med-eBase option or to activate the full Med-eBase program, input the serial number for your copy of Med-eBase in to the Serial Number box. If you have this in electronic format, you can use paste  to enter the Serial Number and then select Next.

Med-eBase is activated online by default. If an internet connection is not available select the Activate Offline option when prompted, select Next and follow the on-screen instructions.

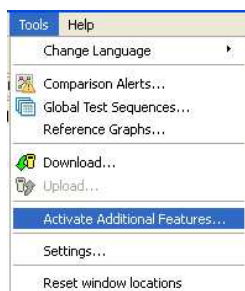


After successful activation the available features will be listed in the Activation Keys box. For trial activations all compatible devices will be available throughout the trial



To enable any additional device types enter your Activation Key(s) into the bottom box one at a time and select Add to add each feature. The active features will be listed in the large text box.

To access the licence screens at a later time, such as to enable other device types after initial activation, select Tools, Activate Additional Features.



End