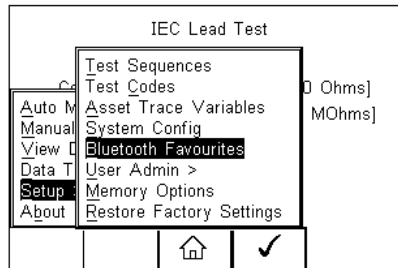
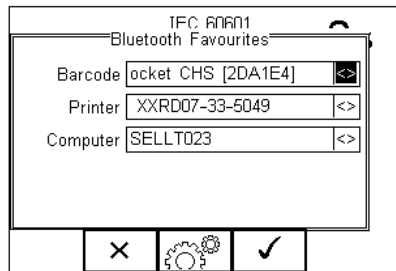


# Pairing Using Bluetooth Favourites

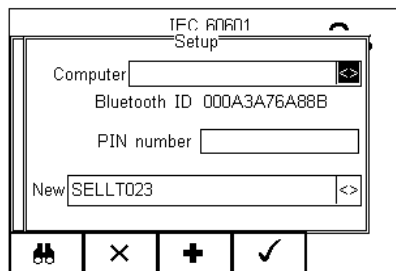
- 1) Selecting F4 and then short key S for Setup and then B for Bluetooth Favourites



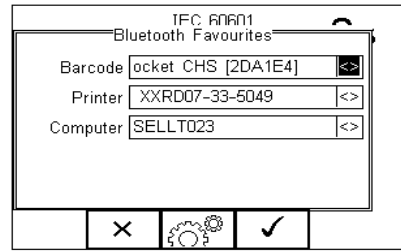
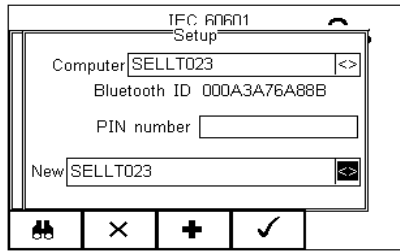
- 2) Scroll to the device type you are attempting to connect to (barcode, printer or computer) and press F3 for set up.



- 3) Select F1 to search for nearby Bluetooth devices and our device should appear in the New menu



- 4) Select F3 **+** to add this device then F4 **✓** to save the changes and return to the Bluetooth Favourites menu



End