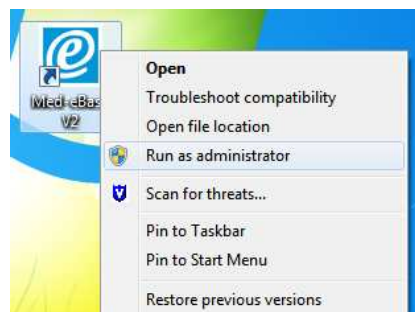


Licence Med-eBase V2.2 with Windows 7

- 1) Insert Med-eBase CD into your CD drive or download Med-eBase from rigelmedical.com. A Med-eBase icon should appear on your desktop.



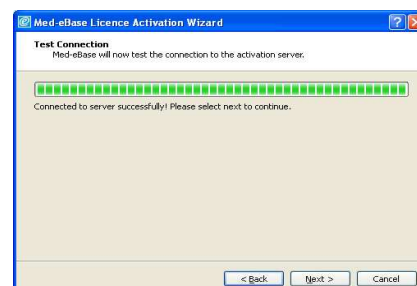
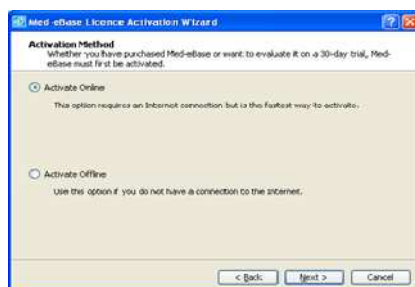
- 2) Right click on the desktop icon and select "run as administrator". Then double clicking on the icon to start the activation process.



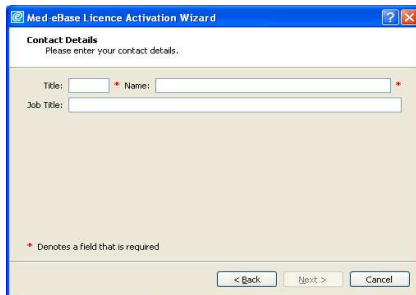
- 3) The installation process will then start automatically with Med-eBase licence activation wizard. Follow the onscreen instructions to activate your serial number.



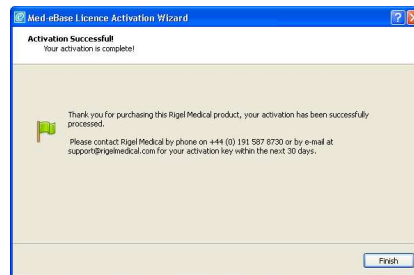
- 4) Activating online requires an internet connection and is the fastest way to activate a product.



- 5) Enter your personal and company information and continue to follow the activation steps to complete the registration process.




- 6) After successful activation close the Med-eBase program then double-click the desktop icon to ensure it opens into the program without requesting the Serial Number to be entered.



Note: This issue is caused by their being a 'hidden administrator' account on some windows 7 operating systems but when Med-eBase is confirmed to be "run as administrator" the serial number will be permanent when reopening the program.

End