

Microsoft Vista and Belkin Bluetooth USB Adapter

1. Installing the Belkin Bluetooth USB Adapter

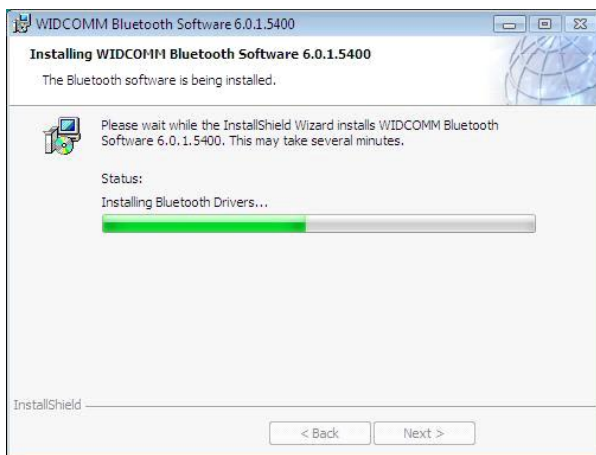
a) Choose to “Run Install.exe”



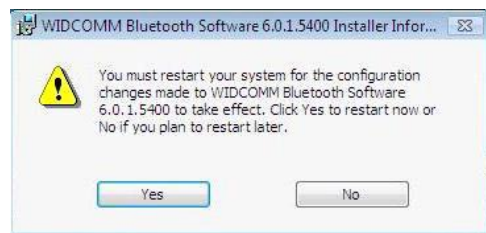
b) Select “Install Bluetooth Software (Vista only)”



c) This may take several minutes



d) When installation is complete click Yes to restart your computer

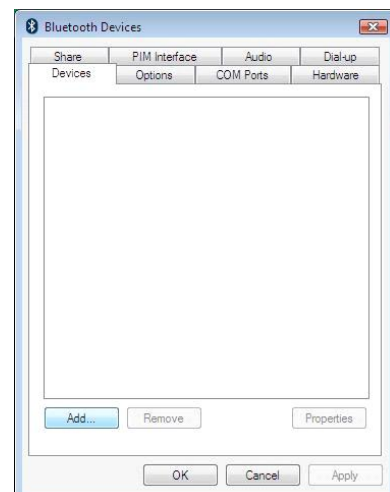


2. Configuring the Belkin Bluetooth USB Adapter

a) After restarting your computer, you will notice that there is a Bluetooth icon in your system tray (bottom right hand corner of your screen). Double click on this icon to open the “Bluetooth Devices” window.



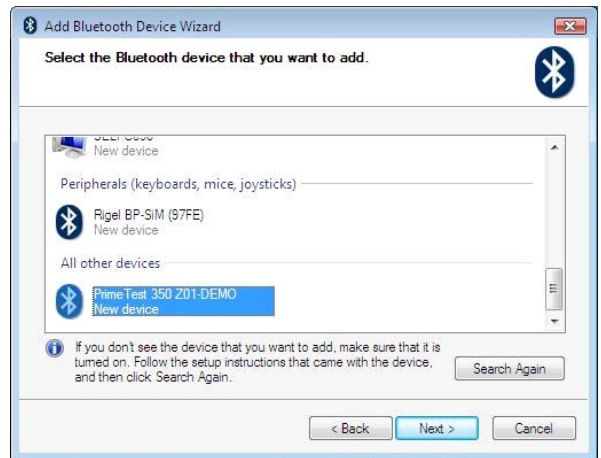
b) Select the Devices tab and click on Add to open the Add Bluetooth Device Wizard



c) Tick the box called “My device is set up and ready to be found”
 Make sure your tester is powered up and ready to use and click Next to start the search for all available devices



d) Highlight the Test Instrument you are using and click “Next”



e) Tick the box “Let me choose my own passkey” and enter 0000 (four zero). Click “Next”



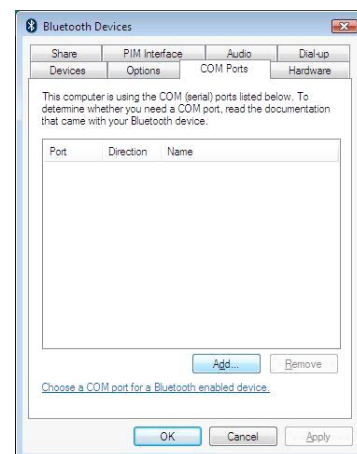
f) When a connection is established click “Finish”



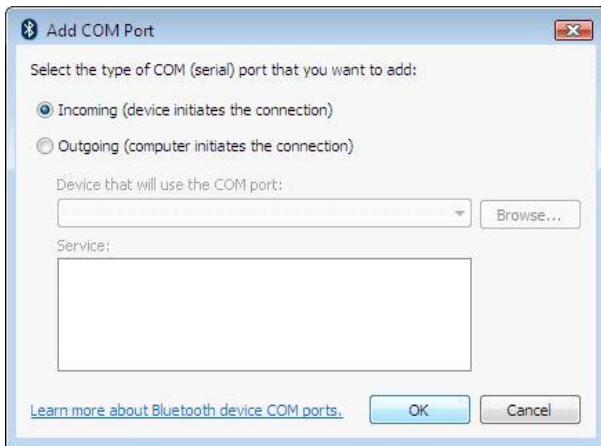
g) The Bluetooth Devices window will reappear.



h) Click on the COM Ports tab and select “Add.”



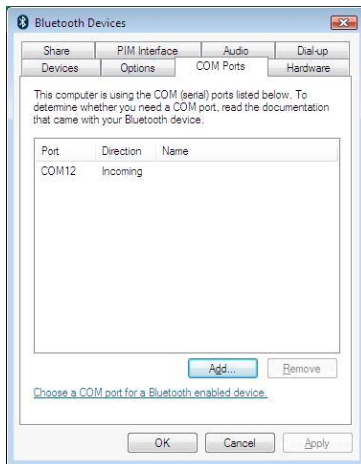
i) Tick the box “Incoming (device initiates the connection)” and click “OK”



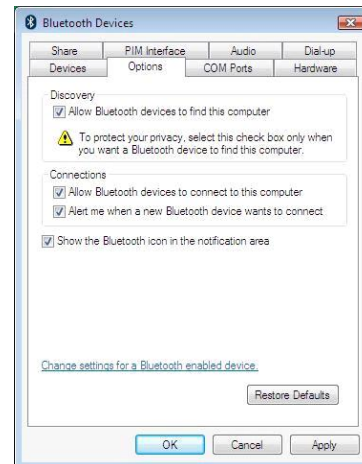
j) The message below will appear briefly.



k) Make a note of the Incoming port number (COM 12 in the example below)

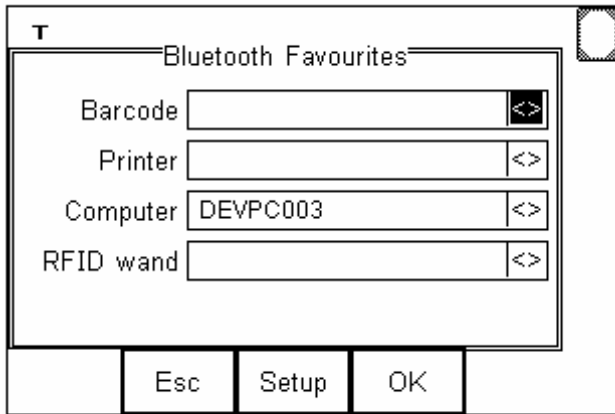


l) Click on the Options tab and tick the box “Allow Bluetooth devices to find this computer” Click OK.



The Belkin Bluetooth USB adapter is now configured and ready to use.

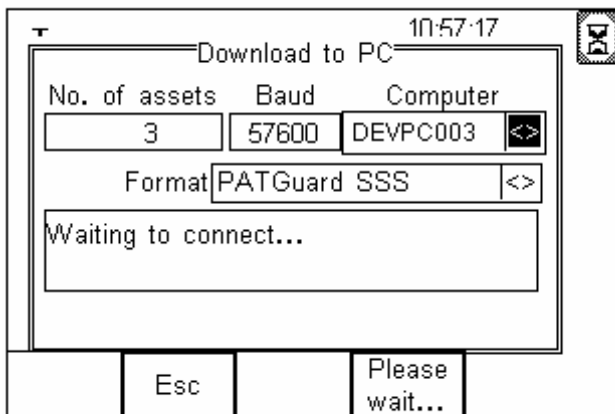
3. Pairing with your Test Instrument



On your test instrument, select Bluetooth Favourites and highlight the Computer setting and choose Set up. Press Search and wait for the test instrument to build up a list of all Bluetooth devices that it can see. Select the computer from this list and Add it into your Bluetooth Favourite.

Press OK to save this setting.

4. Download from Test Instrument to Vista



Now select **Data Transfer -> Download** on the test instrument.

Note that the egg-timer will appear indicating that the test instrument is attempting to connect to the bluetooth serial port on your computer.

Now run the appropriate application program on your computer. Eg PatGuard, MedeBase, DataTransfer, etc. When you run the application and then open the com port (ie COM 12 in this illustration), at that time the egg-timer will disappear and the bluetooth icon will appear on the test instrument.

You will now be able to transfer data between the test instrument and the computer application program.

5. Connecting to a different Test Instrument

Once the bluetooth connection is correctly working with one test instrument, it is easy to add another test instrument.

On the test instrument, configure Bluetooth Favourites and select the Vista computer as the favourite computer.

On the Computer, follow step 2 above. Ie double click on the bluetooth icon in the system tray. Select the "Devices" tab, and click "Add". Follow the instructions as given above. You will then end up with 2 testers listed under the "Devices" tab.

6. Differences between Vista and XP

The main difference to be aware of is in the sequence of events that occur.

With XP:-

1. On the tester select **Data Transfer -> Download**.
2. The connection is made and the tester Bluetooth icon appears.
3. Then you can run the PC application and open the Com port.

With Vista:-

1. On the tester select **Data Transfer -> Download**.
2. The egg-timer appears but there is no connection made.
3. Run the PC application and open the Com port.
4. Now the connection is made and the tester Bluetooth icon appears.