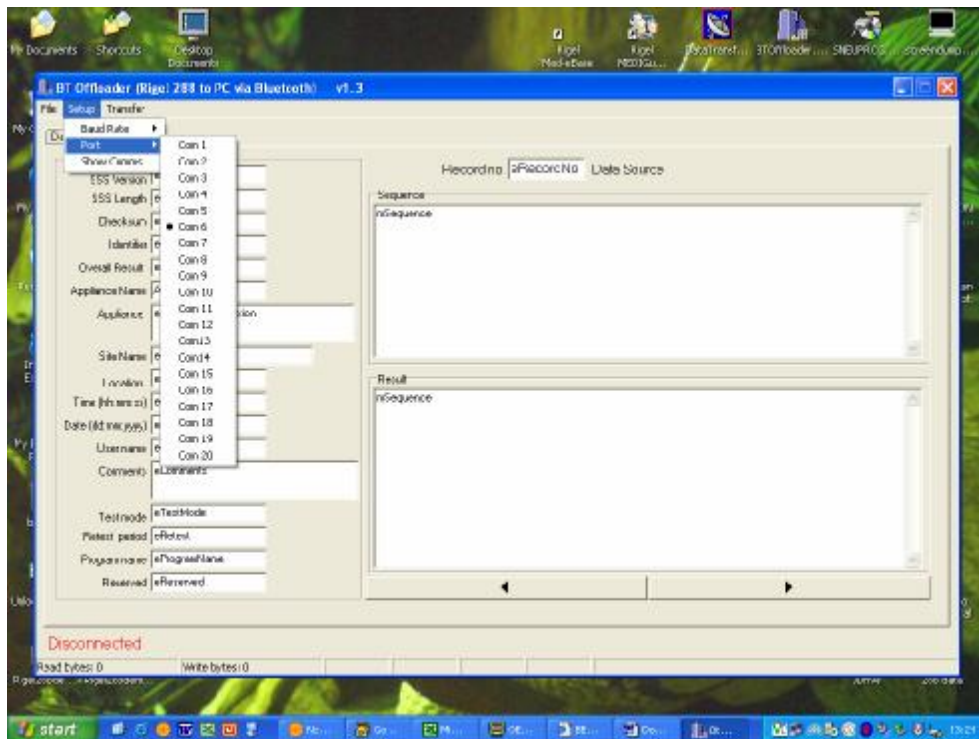


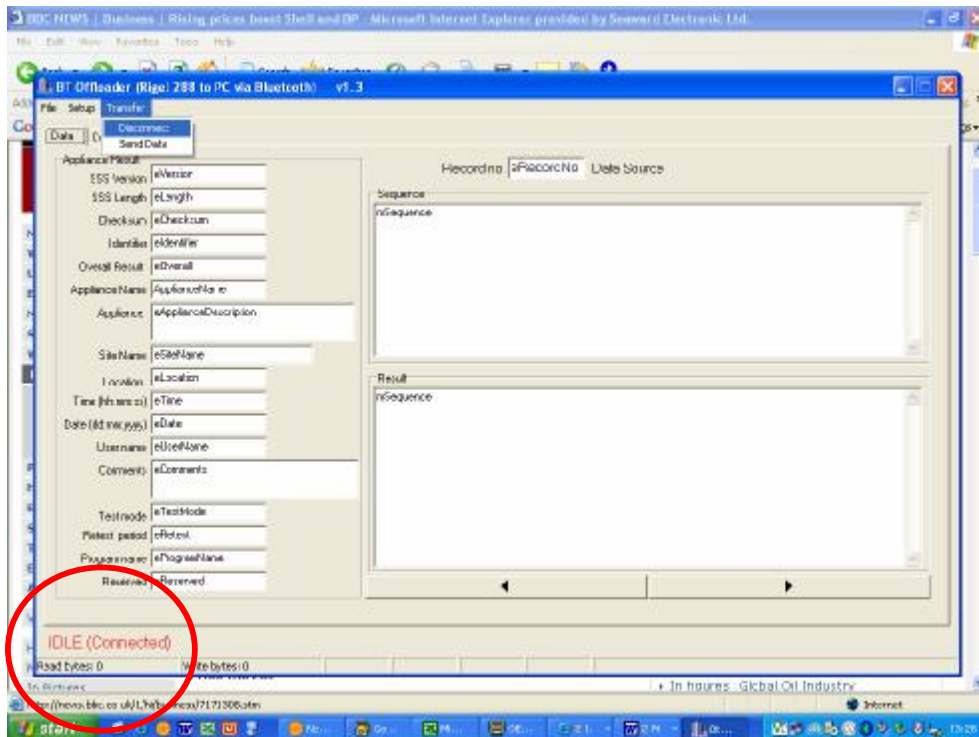
Title : Downloading data in .SSS format, using BTOffloader.exe

Note, the Rigel 288 must be unlocked to allow .sss datatransfer

Open the BTOffloader program and select the comms port as follows:



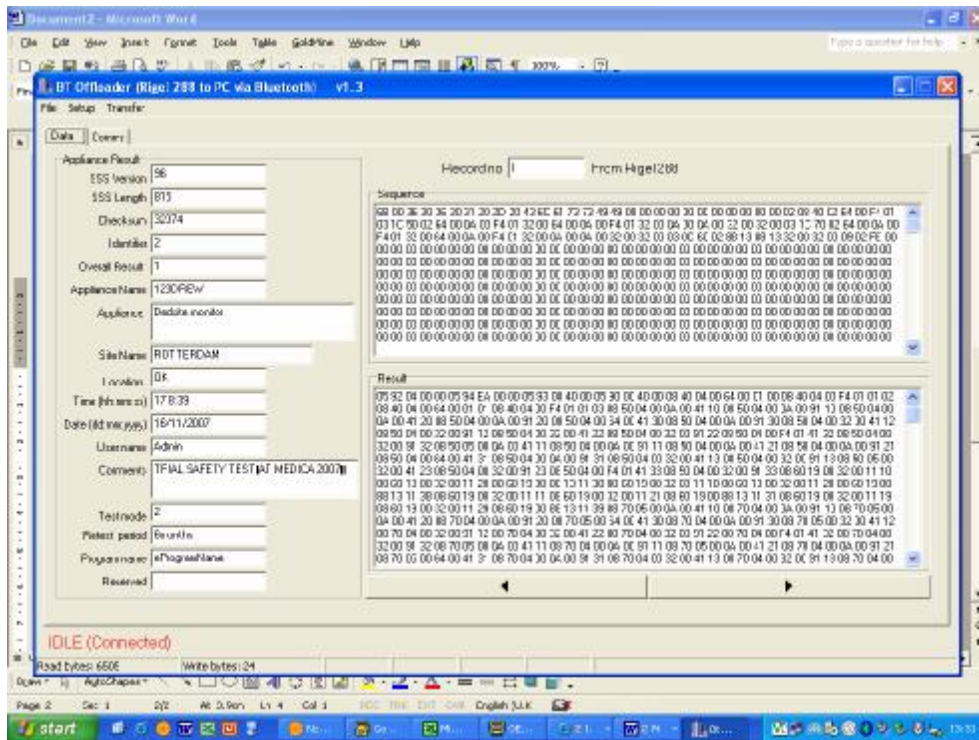
Now connect your 288, selecting Transfer in the BT Offloader task bar;



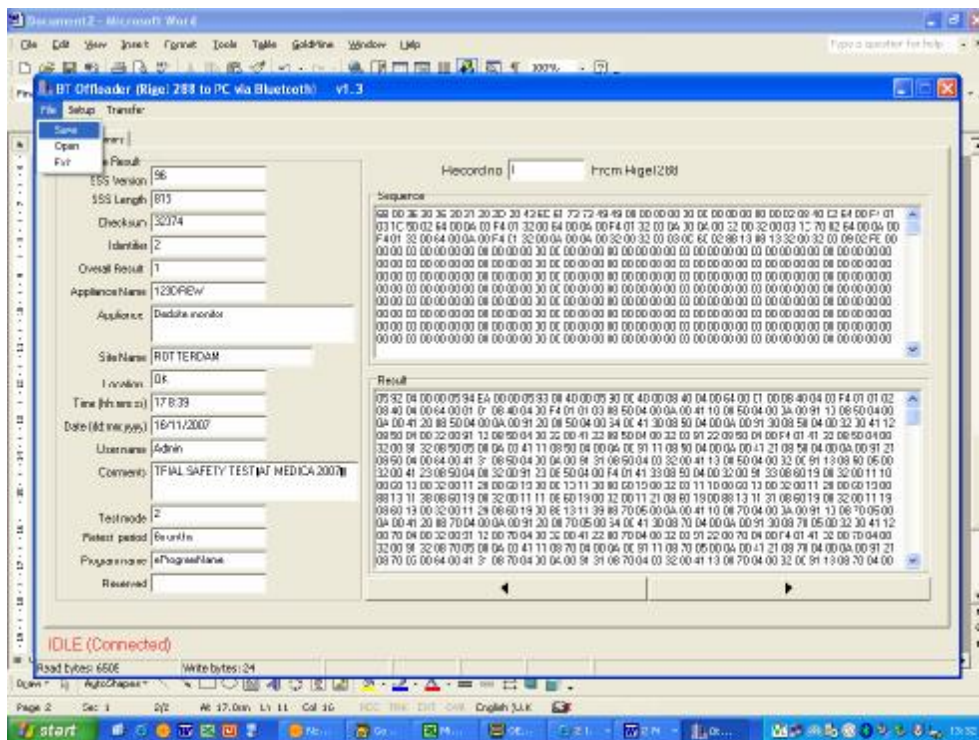
Note that once connected the bottom of the screen will show IDLE (Connected)

Select DATATRANSFER on the 288, select SSS format and press SEND;

Upon successful datatransfer, the screen will be populated with hexadecimal codes as follows;



When finished, chose the SAVE option from FILE, see below;





Save the file at the desired location.

Completed

End.