

Title : How to upload a Test 'n' Tag logo into the Rigel 288 and Rigel 'Sim' range (Uni-Sim/SP-Sim/BP-Sim).

Before you start;

A bitmap logo can be transferred to the Rigel 288 and Rigel Sim range for use with the Seaward Test 'n' Tag print system.

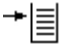


The new logo must meet the following criteria:

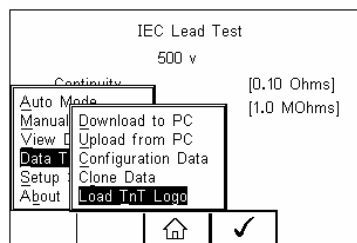
- The logo must be monochrome (black & white, inverted), not greyscale or colour.
- The file must have a .bmp extension
- The size of the logo must not exceed 320 x 240 pixels.

The unit can only hold one logo, if you add a new logo, the logo currently on the handset will be overwritten.

Note: All screenshots have been taken from the Rigel 288, some screens on the Sim range may differ slightly.

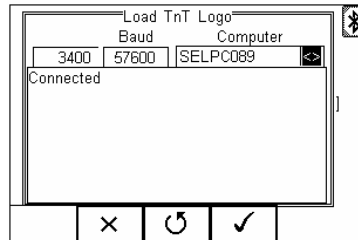
Uploading a logo.

1. Press  button (F4), select Data Transfer > using the up/down keys and press  button (F4), select Load TnT Logo and press  button (F4).





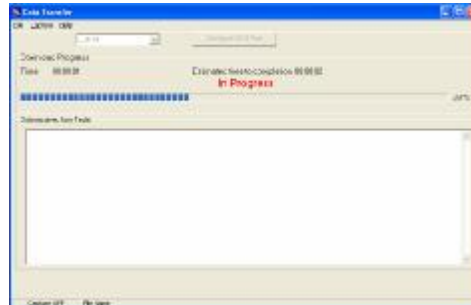
2. The Rigel unit will now attempt to connect to the PC, set up in Bluetooth favourites. When a connection has been established the display will be shown as below.



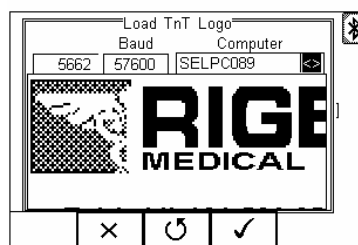
Note: If a connection can not be established between the Rigel unit and PC, please refer to the *Bluetooth Favourites* section of the instruction manual that accompanied your unit.

3. The Rigel unit is now ready to receive data. The amount of data received is shown numerically on the top left of the display.

4. When using the DataTransfer program on the PC, select Send File from the file menu, select the required .bmp file and click on Open. The DataTransfer program will now transfer the file to the Rigel unit as below.



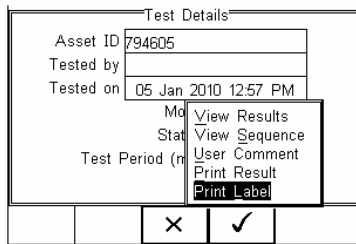
5. When the transfer is complete the Rigel unit will display your custom logo as shown below.




6. Select  button (F4) to save the logo.


7. In order to set up the Rigel unit to print the custom logo on the Pass/Fail label, select the test result you for which you wish to print the label.

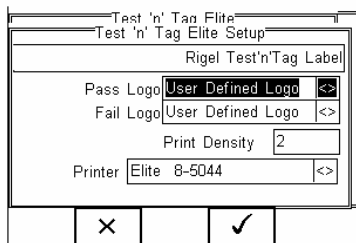
8. Select Print Label  button (F4) to confirm.



9. Select  button (F3) to access print options.



10. Then scroll through the Pass/Fail Logo menu to select User Defined Logo, as shown below. Press  button (F4) to confirm.



Note: The file transfer can be made using any suitable PC application such as the Seaward Bluetooth download program (data transfer.exe) or Hyperterminal.

End.